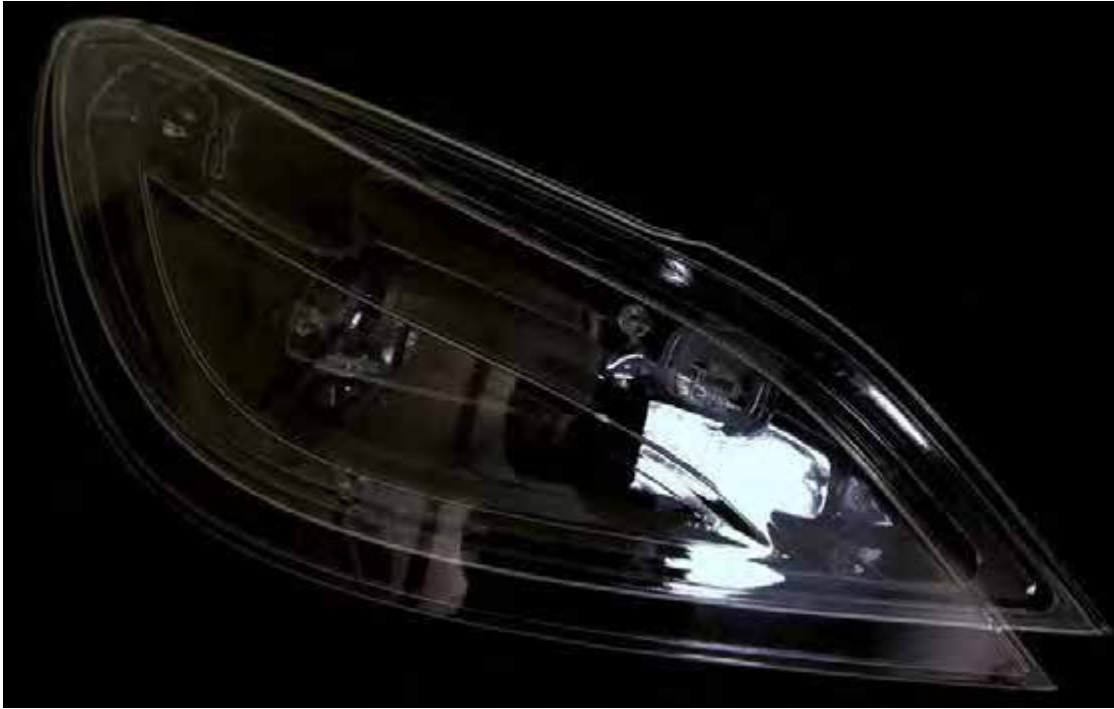


# Accura<sup>®</sup> ClearVue<sup>™</sup> Material



3DSYSTEMS<sup>™</sup>



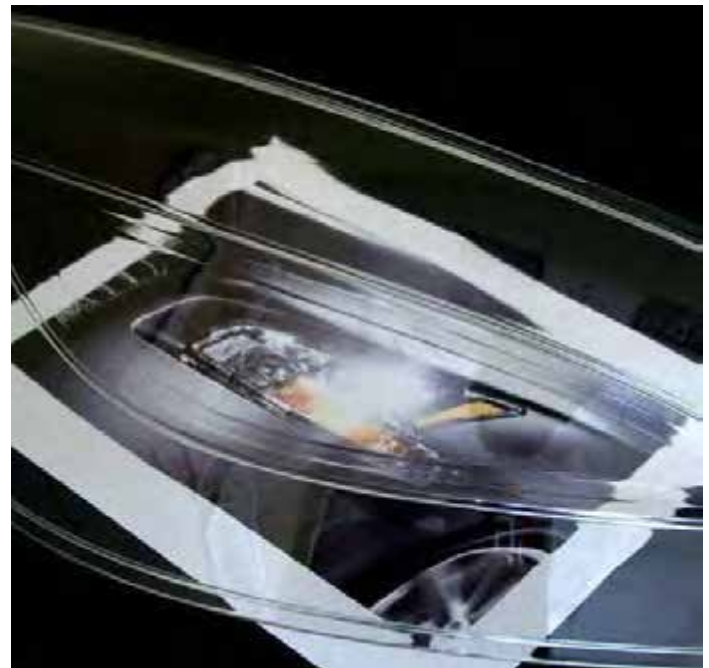
*Simulate the properties and appearance of Polycarbonate and ABS with this durable clear plastic.*

## Applications

- General purpose prototyping
- Models requiring high clarity
  - Headlamps and lenses
  - Fluid flow and visualization models
  - Transparent assemblies
- Snapfits and complex assemblies
- Medical models and medical devices

## Benefits

- The highest clarity and transparency
- Durable and strong
- Humidity and moisture stable
- USP class VI capable



# Accura<sup>®</sup> ClearVue<sup>™</sup> Material

For use with solid-state stereolithography (SLA<sup>®</sup>) Systems



## Technical Data

### Liquid Material

Measurement	Condition	Value
Appearance		Clear/Transparent
Liquid Density	@ 25 °C (77 °F)	1.1 g/cm <sup>3</sup> at 25°C
Solid Density	@ 25 °C (77 °F)	1.17 g/cm <sup>3</sup> at 25°C
Viscosity	@ 30 °C (86 °F)	235-260 cps
Penetration Depth (Dp)		6.1 mils
Critical Exposure (Ec)		9.5 mJ/cm <sup>2</sup>

### Post-Cured Material

Measurement	Condition	Metric	U.S.
Tensile Strength	ASTM D 638	46 - 53 MPa	6,700 - 7,700 PSI
Tensile Modulus	ASTM D 638	2,270 - 2,640 MPa	329 - 383 KSI
Elongation at Break (%)	ASTM D 638	3 - 15 %	3 - 15 %
Flexural Strength	ASTM D 790	72 - 84 MPa	10,400 - 12,200 PSI
Flexural Modulus	ASTM D 790	1,980 - 2,310 MPa	287 - 335 KSI
Impact Strength (Izod Notched)	ASTM D 256	40 - 58 J/m	0.70 - 1.1 ft-lb/in
Heat Deflection Temperature	ASTM D 648 @ 66 PSI @ 264 PSI	51 °C 50 °C	124 °F 122 °F
Hardness, Shore D		80	80
Co-efficient of Thermal Expansion	ASTM E 831-93 25-50° C 50-100° C	122 µm/m-°C 155 µm/m-°C	68 µin/in-°F 86 µin/in-°F
Glass Transition (Tg)	DMA, E''	62° C	144° F
Water Absorption	ASTM D 570-98	0.3%	0.3%



3D Systems Corporation  
333 Three D Systems Circle  
Rock Hill, SC 29730 U.S.A.

Tel: +1 803.326.4080  
Toll-free: 800.889.2964  
Fax: +1 803.324.8810

moreinfo@3dsystems.com  
www.3dsystems.com  
NYSE: DDD

Warranty/Disclaimer: The performance characteristics of these products may vary according to product application, operating conditions, or with end use. 3D Systems makes no warranties of any type, express or implied, including, but not limited to, the warranties of merchantability or fitness for a particular use. © 2011 by 3D Systems, Inc. All rights reserved. Specifications subject to change without notice. ClearVue, iPro and the 3D logo are trademarks and Accura, Viper and SLA are registered trademarks of 3D Systems, Inc.